



Structure: ST 1
 Job Number:
 Job Name: Metric Storm
 Job Location:

Demo
 Version

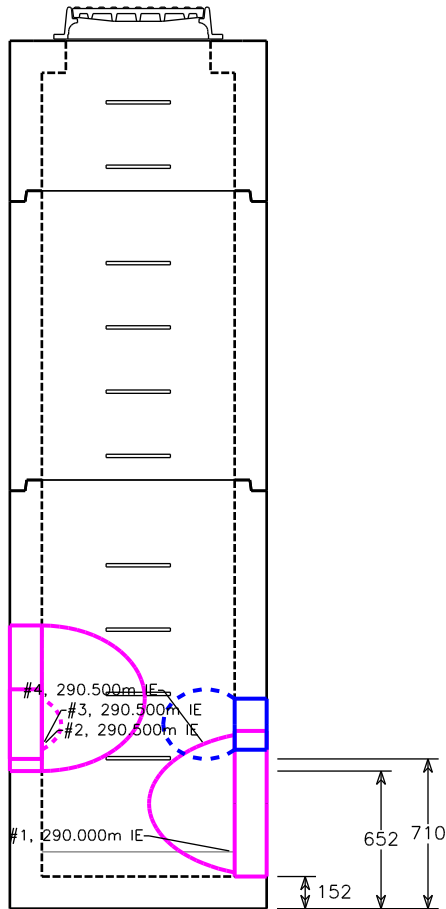
512 N LINCOLN ST. - SUITE 205 BAY CITY, MI 48708
 TEL 989-894-2785 866-894-2785 FAX 989-894-2805

Specification: M-3.3 w/686

Contractor:
 Based on:

| Design Build Height | | Stack Build Height | | Manufacture Date: |
|----------------------|-----------------|-----------------------|-----------------|---|
| Top of Casting | + 294.000m | Frame | + 0.146m | Ship Date: |
| Outlet Invert | - 290.000m | Adjustment | + 0.008m | |
| Design Height | = 4.000m | Eccentric Slab | + 0.762m | Frame/Ring: 401.010A F&C Closed |
| | | Risers | + 1.372m | Grate/Cover: 401.010A F&C Closed |
| | | Base Gain | + 1.712m | Channel: 4-Way Full Height Channel By Contractor |
| | | Design Height | = 4.000m | Notes: |
| | | Contractor Channel | + 0.116m | |
| | | Stock Floor | + 0.152m | |
| | | Outside Height | = 4.269m | |

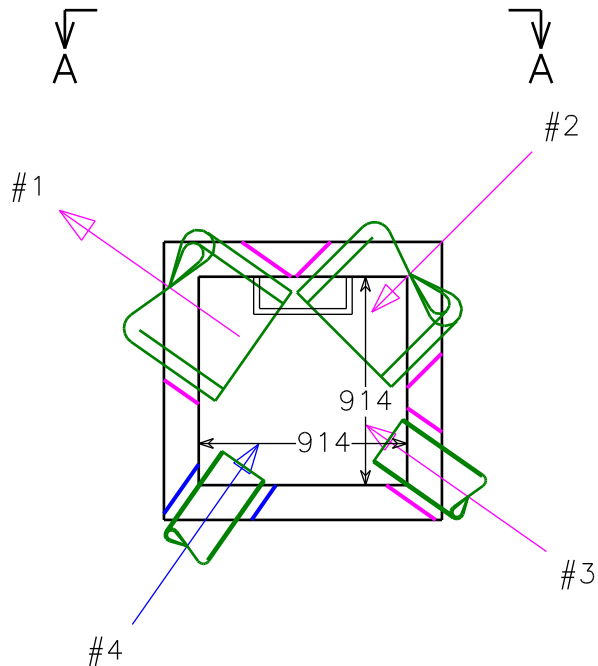
Elevation (View A-A)



Opening Schedule

| ID | Bottom | Pipe Size | Hole Size | Connector | Angle | Dist. |
|----|--------|----------------|-----------|-----------|-------|-------|
| #1 | 152mm | 450mm RCP B 40 | 690mm | Mortar | 305° | N/A |
| #2 | 652mm | 450mm RCP B 40 | 690mm | Mortar | 45° | N/A |
| #3 | 710mm | 200mm PVC C900 | 330mm | Mortar | 125° | N/A |
| #4 | 710mm | 200mm PVC C900 | 330mm | Mortar | 215° | N/A |

Plan View



BOM For Stack

| Section ID | Description | Qty. | Weight |
|-----------------------------|------------------------|----------|--------------|
| A | M-3.3 Top 686 Ecc 762H | 1 | 1,317 |
| B | M-3.3 Riser 1372H | 1 | 2,134 |
| C | M-3.3 Base 152F 1981H | 1 | 3,149 |
| Totals (pieces, kgs) | | 3 | 6,600 |