



512 N LINCOLN ST. - SUITE 205 BAY CITY, MI 48708
 TEL 989-894-2785 866-894-2785 FAX 989-894-2805

Structure: NewStructure

Job Number:

Job Name: Sample KOEG

Job Location: 123 Sample St

Specification: K OEG Inlet 36x42 (Open End Grate)

Contractor: Sample Contracting

Channel:

Based on: Plans 2006-01-23

Demo
Version

Notes:

Ship Date:

Manufacture Date:

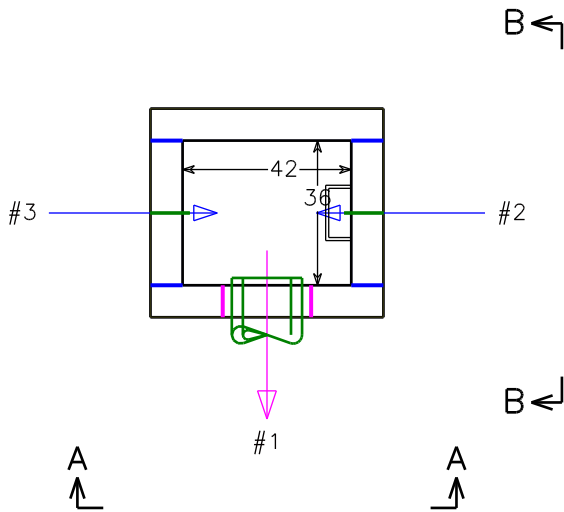
Design Build Height

Top of Casting	+	22.40'
Outlet Invert	-	18.10'
Design Height	=	4.30'

Opening Schedule

ID	Bottom	Pipe Size	Hole Size	Connector
#1	0.0"	12" RCP C	22"	Mortar Pipe On Bottom
#2	46.0"	No Pipe Size	8"x36"	
#3	46.0"	No Pipe Size	8"x36"	

Plan View

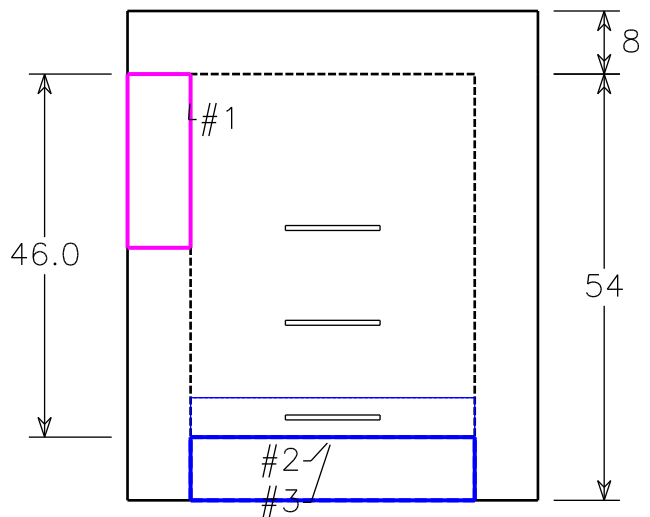
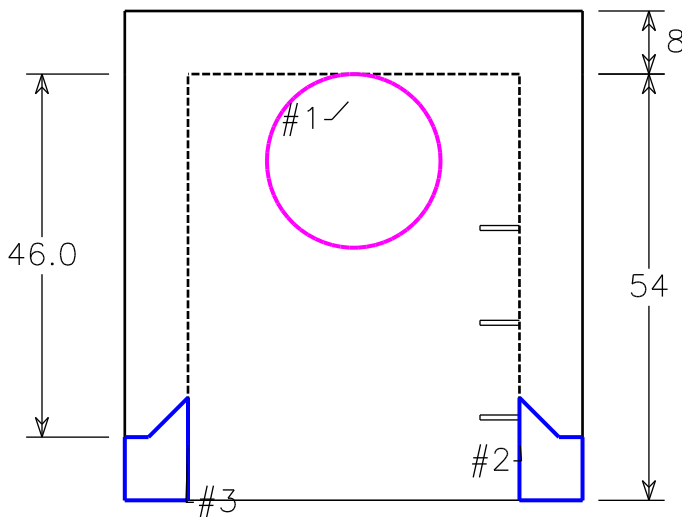


BOM For Stack

ID	Description	Qty.	Weight
A	36x42 K OEG Base 8F 54HI	1	8,934
Totals (pieces, lbs)		1	8,934

Elevation (View A-A)

Elevation (View B-B)



Part Description: 36x42 K OEG Base 8F 54HI