



Structure: CB1
 Job Number:
 Job Name: English Storm
 Job Location:

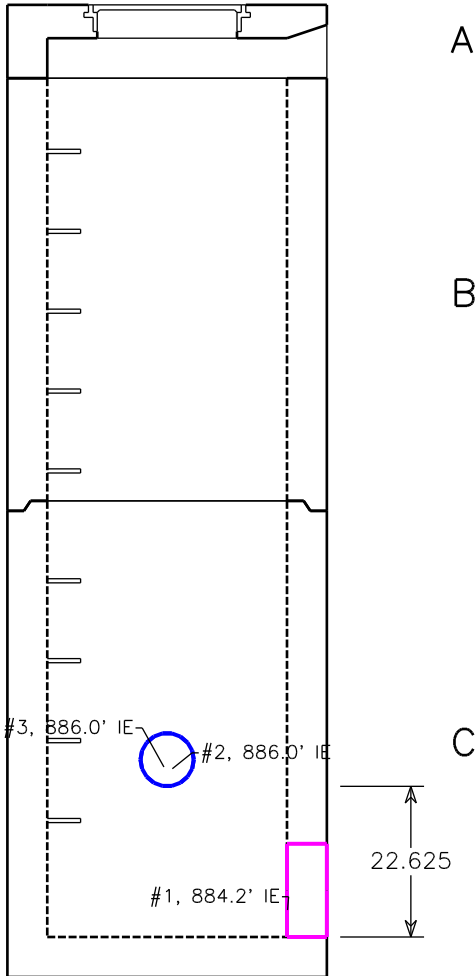
Demo
 Version

512 N LINCOLN ST. - SUITE 205 BAY CITY, MI 48708
 TEL 989-894-2785 866-894-2785 FAX 989-894-2805

Specification: 3'x3' Storm
 Contractor:
 Based on:

Design Build Height		Stack Build Height		Manufacture Date:
Top of Casting	+ 895.63'	Adjustment	+ 0.02'	Ship Date:
Outlet Invert	- 884.20'	Top	+ 0.92'	
Design Height	= 11.43'	Risers	+ 5.42'	Frame/Ring:
		Base Gain	+ 5.08'	Grate/Cover:
		Design Height	= 11.43'	Channel: No Channel
		To Floor	+ 0.25'	Notes:
		Floor Thickness	+ 0.50'	
		Outside Height	= 12.18'	

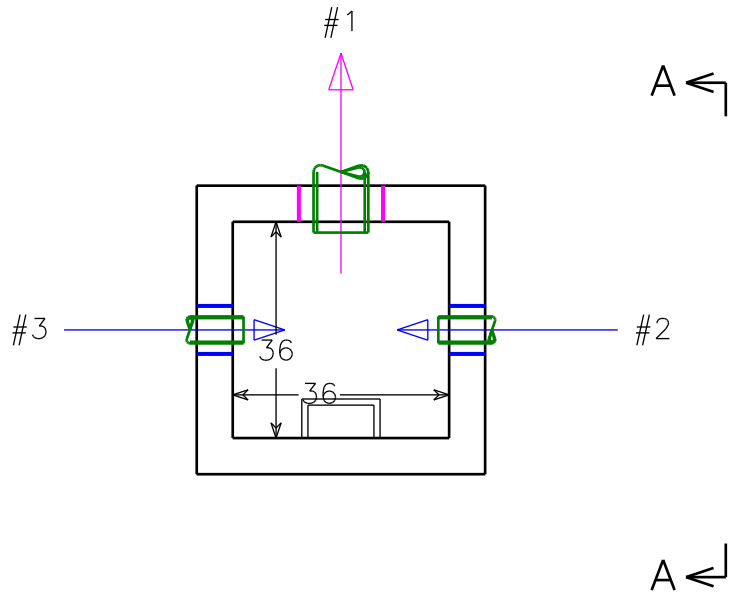
Elevation (View A-A)



Opening Schedule

ID	Bottom	Pipe Size	Hole Size	Connector	Angle	Dist.
#1	0.000"	8" ADS N-12	14"	Mortar	270°	N/A
#2	22.625"	4" PVC Sdr 17 CL	8"	Mortar	0°	N/A
#3	22.625"	4" PVC Sdr 17 CL	8"	Mortar	180°	N/A

Plan View



BOM For Stack

Section ID	Description	Qty.	Weight
A	3'x3' Curb Inlet w/1737 11H	1	1,430
B	3'x3' Manhole Section 65H	1	5,554
C	3'x3' Storm Base 6F 64HI	1	6,691
Totals (pieces, lbs)		3	13,675