



512 N LINCOLN ST. - SUITE 205 BAY CITY, MI 48708  
 TEL 989-894-2785 866-894-2785 FAX 989-894-2805

Structure: **ST9**

Job Number:

Job Name: English Storm - Round and Box

Job Location:

Specification: **6'x6' Storm**

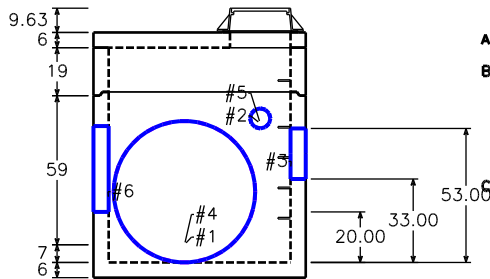
Contractor:

Based on:

Demo  
Version

Design Build Height		Stack Build Height		Manufacture Date:
Top of Casting	+ 975.00'	Ring	+ 0.75'	<b>Ship Date:</b>
Outlet Invert	- 967.20'	Adjustment	+ 0.05'	
<b>Design Height</b>	<b>= 7.80'</b>	Eccentric Slab	+ 0.50'	<b>Frame/Ring:</b> R-1713
		Risers	+ 1.58'	<b>Grate/Cover:</b> R-1713
		Base Gain	+ 4.92'	<b>Channel:</b> No Channel
		<b>Design Height</b>	<b>= 7.80'</b>	<b>Notes:</b>
		To Floor	+ 0.58'	
		Floor Thickness	+ 0.50'	
		<b>Outside Height</b>	<b>= 8.88'</b>	

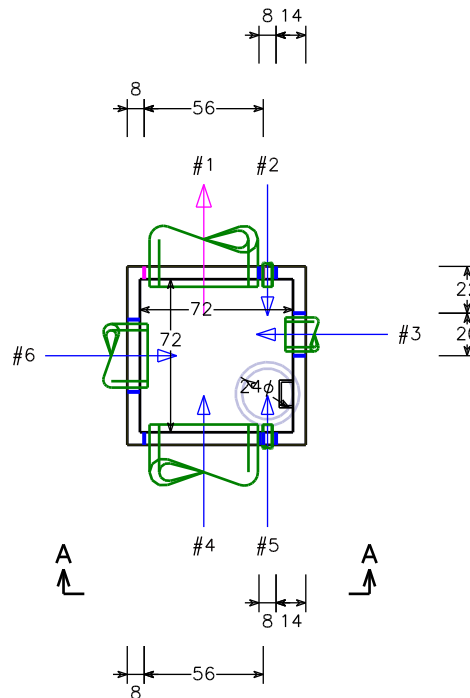
**Elevation (View A-A)**



**Opening Schedule**

ID	Bottom	Pipe Size	Hole Size	Connector	Angle	Dist.
#1	0.00"	42" RCP B	56"	Mortar	0°	N/A
#2	53.00"	4" Hancor	8"	Mortar	0°	N/A
#3	33.00"	12" RCP B CL-2	20"	Mortar	90°	N/A
#4	0.00"	42" RCP B	56"	Mortar	180°	N/A
#5	53.00"	4" Hancor	8"	Mortar	180°	N/A
#6	20.00"	24" RCP B CL-2	34"	Mortar	270°	N/A

**Plan View**



**BOM For Stack**

Section ID	Description	Qty.	Weight
A	6'x6' Flat lid 24" Ecc 6H	1	3,395
B	6'x6' Manhole Section 19H	1	2,932
C	6'x6' Storm Base 6F 66HI	1	11,451
<b>Totals (pieces, lbs)</b>		<b>3</b>	<b>17,778</b>